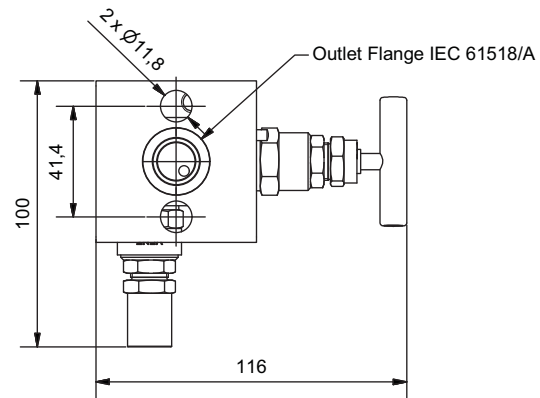
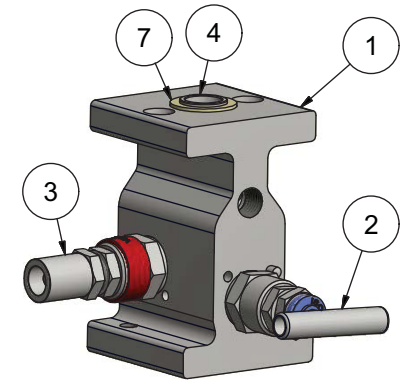
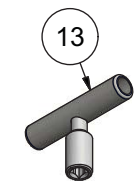
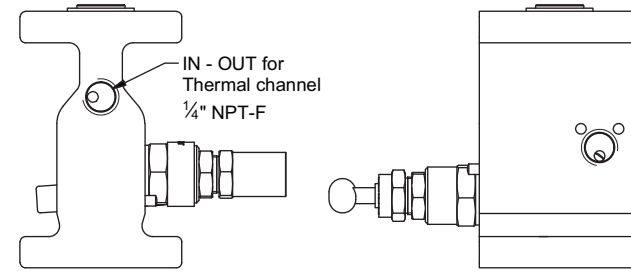
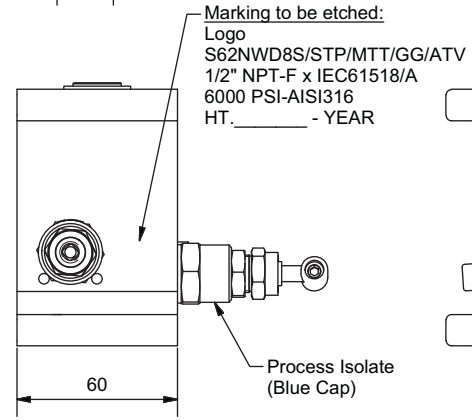
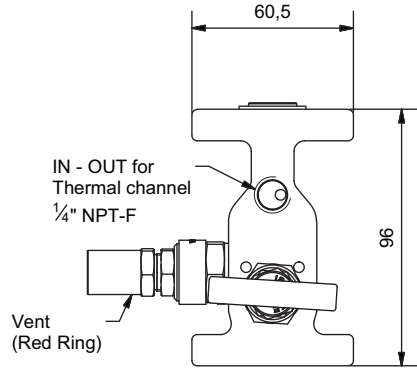
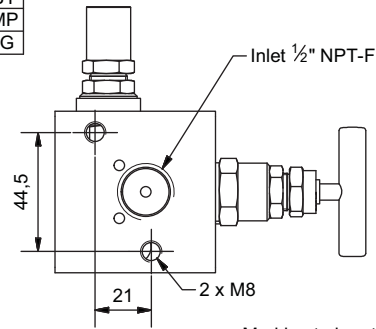
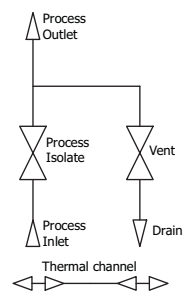


REVISION HISTORY			
REV	DESCRIPTION	DATE	BY
1	Isolate valve changed to T bar	17-03-2014	MP
2	Updated acc. to standard	03-03-2016	IG



FLOW DIAGRAM



Bonnet gasket material		
Type	Grafoil	PTFE
Process Isolate	x	
Equalise	x	
Vent	x	
IEC 61518/A	x	

Parts List						
ITEM	QTY	PART	MATERIAL	DWG/ PART NO.	HEAT NO.	Certificate
1	1	Manifold Housing	AISI 316	07-03-0201		3.1
2	1	Bonnet Type SN - T bar	AISI 316	07-00-0700		3.1, Housing only
3	1	Bonnet Type AN - Anti tamper	AISI 316	07-00-0900		3.1, Housing only
4	1	Spigot	AISI 316	07-00-0600		3.1, Housing only
5	2	Pin Ø4x12mm - DIN 1474	A4			none

Included Accessories						
ITEM	QTY	PART	MATERIAL	DWG/ PART NO.	HEAT NO.	Certificate
6	1	Handle for Anti Tamper Bonnet	AISI 316			none
7	1	Gasket		07-00-0601		none
8	2	Pin Ø4x16mm - DIN 1474	A4			none
9	2	Hex head bolt 7/16" UNF x 1"	A2			none
10	1	1/4" NPT Plug	AISI 316			none

Nace MR-01-75/ISO 15156
 Material certificate acc. to EN 10204-3.1
 Tested according to A.P.I.598

Scale	Size	Date	Sign.	2 Valve Profile Manifold - 2T311.3A02 Assembly - 2 Valve - 1/2" NPT-F / IEC 61518/A		Gen. tolerances: ISO 2768 m
1 : 2	A3	Draw. 04-03-2014	MP	Customer: Project:		Drawing No.: 07-04-0200-2
Weight: 1.8 kg					Check	Order No.: