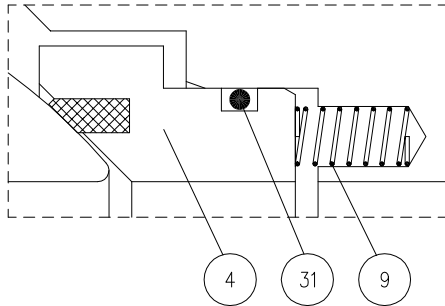
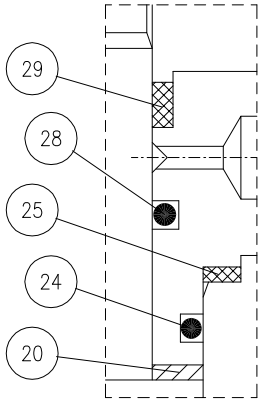


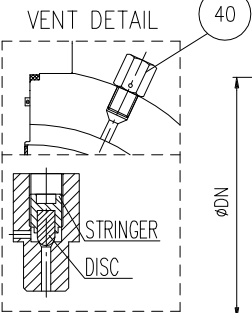
SEAT RING Detail "A"



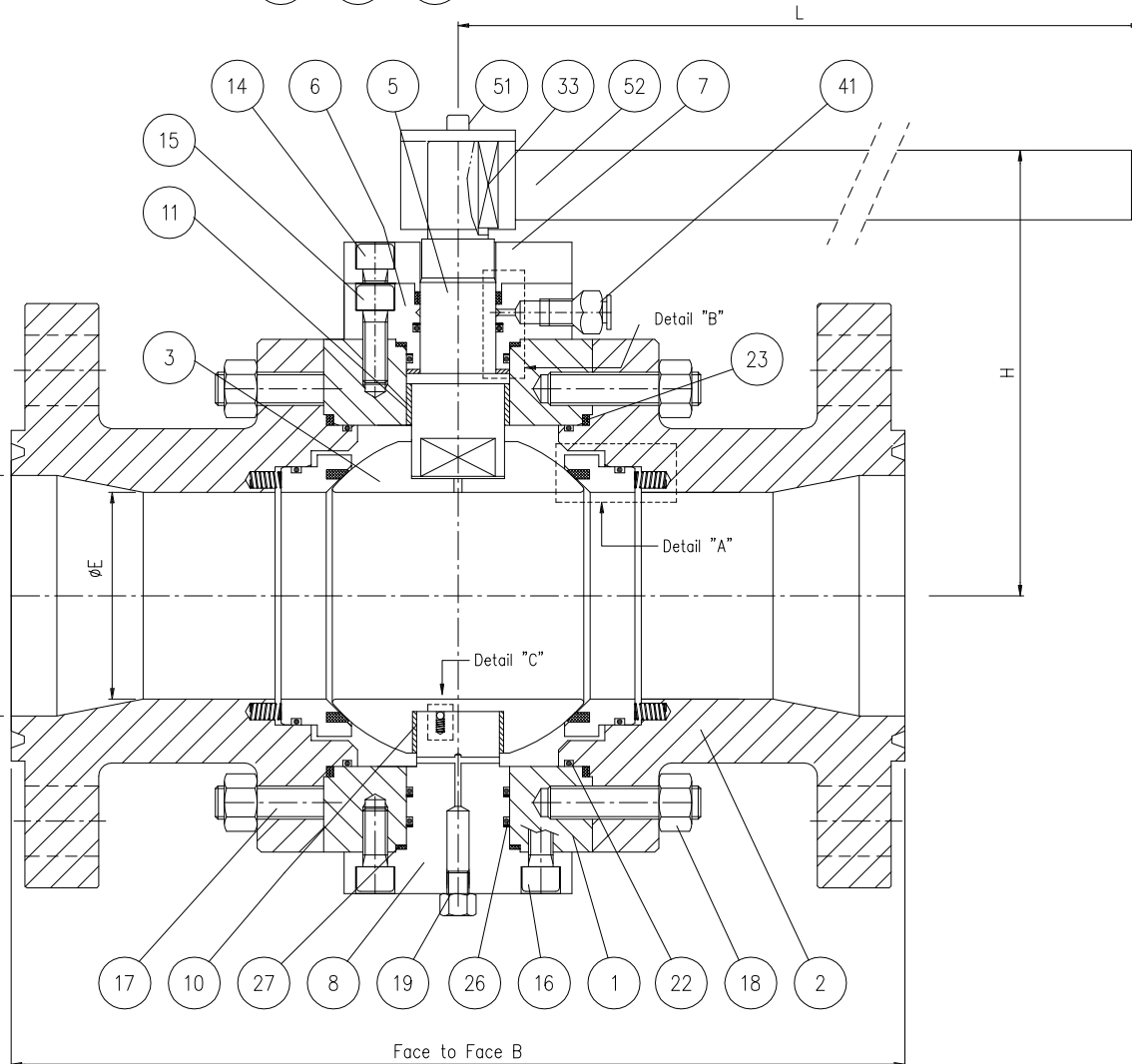
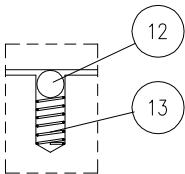
GLAND PLATE Detail "B"



- Valves in according to API 6D - B16.34
- Flanges in according to ANSI B16.5 - B16.10
- Fire Safe design in according to API 6FA - ISD 10497
- Pressure testing in according to API 598



ANTISTATIC DEVICE SYSTEM Detail "C"



Dn	Class	L	E	B	H	Weight
2"	1500	450	38	371	130	50 Kg

PART.N°	DESCRIPTION	MATERIAL
01	BODY	ASTM A 350 LF2
02	CLOSURE	ASTM A 350 LF2
03	BALL	ASTM A 182 F316
04	SEAT WITH INSERT	ASTM A 182 F316 + DEVLON
05	STEM	ASTM A 182 F316
06	GLAND PLATE	ASTM A 350 LF2
07	LEVER ADAPTER PLATE	ASTM A 350 LF2
08	TRUNNION	ASTM A 182 F316
09	SEAT SPRING	INCONEL X-750
10	TRUNNION BEARING	DU-DRY
11	STEM BEARING	DU-DRY
12	ANTISTATIC BALL	AISI 316
13	ANTISTATIC SPRING	AISI 316
14	ADAPTER PLATE CAPSCREW	Class 8.8
15	GLAND PLATE CAPSCREW	Class 8.8
16	TRUNNION CAPSCREW	Class 8.8
17	BODY STUDS	ASTM A 320 L7
18	BODY STUD NUTS	ASTM A 194 GR.7
19	DRAIN PLUG	AISI 316
20	UPPER THRUST WASCHER	DU-DRY
22	BODY O-RING	VITON
23	BODY F.S. GASKET	GRAPHITE
24	GLAND PLATE O-RING	VITON
25	GLAND PLATE F.S. GASKET	GRAPHITE
26	TRUNNION O-RING	VITON
27	TRUNNION F.S. GASKET	GRAPHITE
28	STEM O-RING	VITON
29	STEM PACKING F.S.	GRAPHITE
30	STEM PACKING RING	AISI 316
31	SEAT GASKET O-RING	VITON
33	STEM KEY	AISI 316
40	VENT VALVE	AISI 316
41	STEM GREASE FITTING	AISI 316
51	SCREW	CLASS 8.8
52	WRENCH	CARBON STEEL

Project:	140003	Customer:	IMPERIAL				
		Customer order:	I-14-1060009				
		0	First issue	D.D.L.	09/12/13	D.R.	09/12/13
		Rev.	Description Review	Dis.	Date	App.	Date
Dwg. N°:	TBVSBR05015RJ0305B01GV DLO	Draw:	A3	Scale:	1:1		
Component: Ball Valve "Side Entry" Trunnion - Dn 2" Class 1500 RTJ - Red. Bore							
Denomination: OVERALL DIMENSIONS BILL OF MATERIALS							